

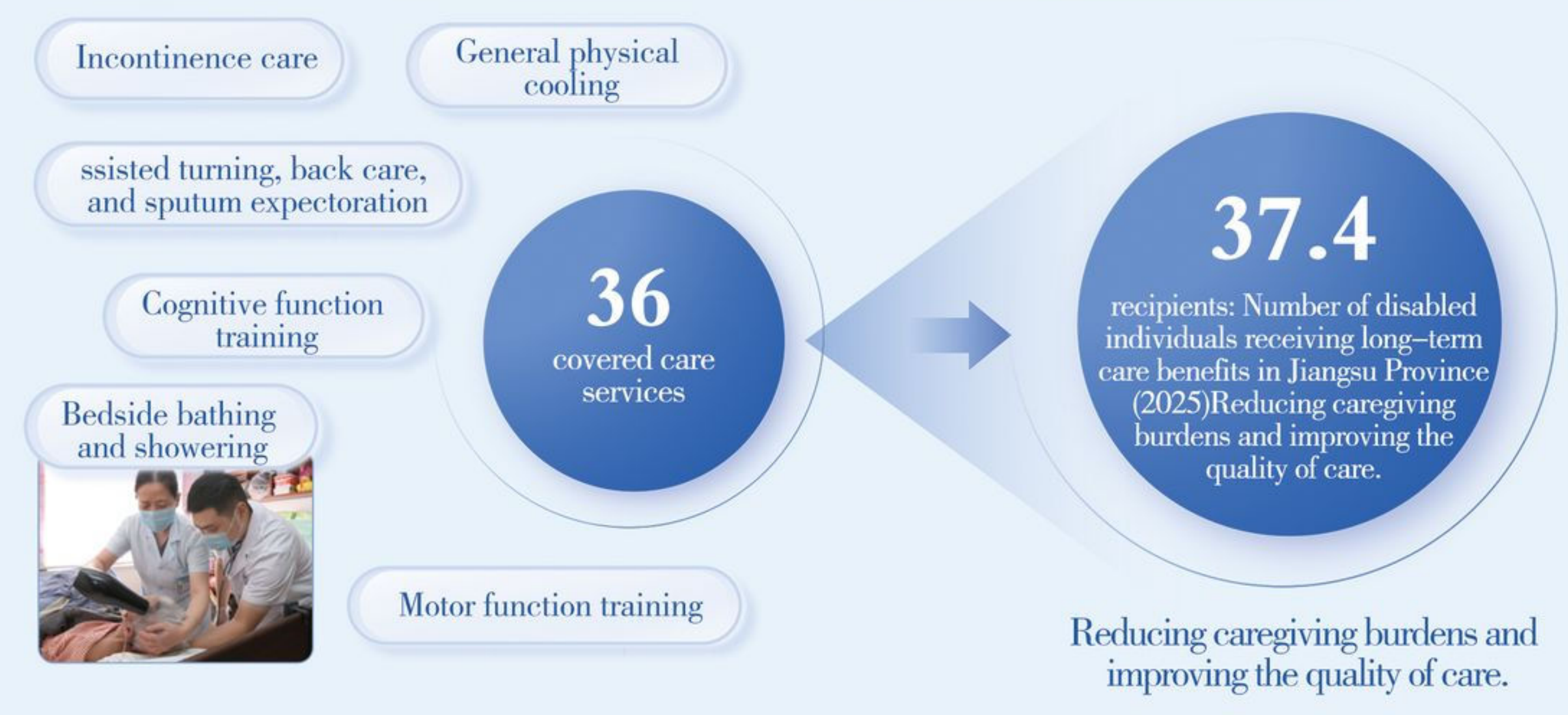
China Jiangsu Province's Exploratory Practice in Implementing Long-Term Care Insurance

Jiangsu is located in eastern China, within the Yangtze River Delta region. It covers an area of 107,200 square kilometers, accounting for approximately 1% of China's total land area. As China's second-largest provincial economy, Jiangsu achieved a regional GDP of 14.2 trillion yuan in 2025. The province will advance its long-term care insurance program and integrate it into a population service system that covers the entire life cycle of all residents.

Pioneering Exploration & Province-Wide Coverage



User-Friendly Policies & Service Quality Enhancement



New Occupations & Industrial Development



Future Outlook

